



www.gsprecision.com

Topics Covered

- G.S. Precision Overview
- Mexico Operations
- Markets Served
- Manufacturing Capabilities
- Products
- Operations
- Quality

Company History

- Founded in Wilmington, Vermont in 1958
- Originally served Specialty Bearing and Gyroscope industries
- First major expansion in 1975 into Turbine Engine market
- Moved operations to Brattleboro, Vermont in 1985
- Opened facility in Guaymas, Mexico in 2003
- Opened second facility at Brattleboro site in 2008
- Acquired Matthews Aerospace Industries, Orange, California in 2010
- Expanded Mexico operation into new, 37,000 sq. ft. facility in May, 2011
- Family owned and operated for more than 50 years



Our Values

- Guided by core principles of:
 - *QUALITY*
 - *EFFICIENCY*
 - *RELIABILITY*
- Focus on Continuous Improvement through Lean Manufacturing Program
- Commitment to Customer Satisfaction

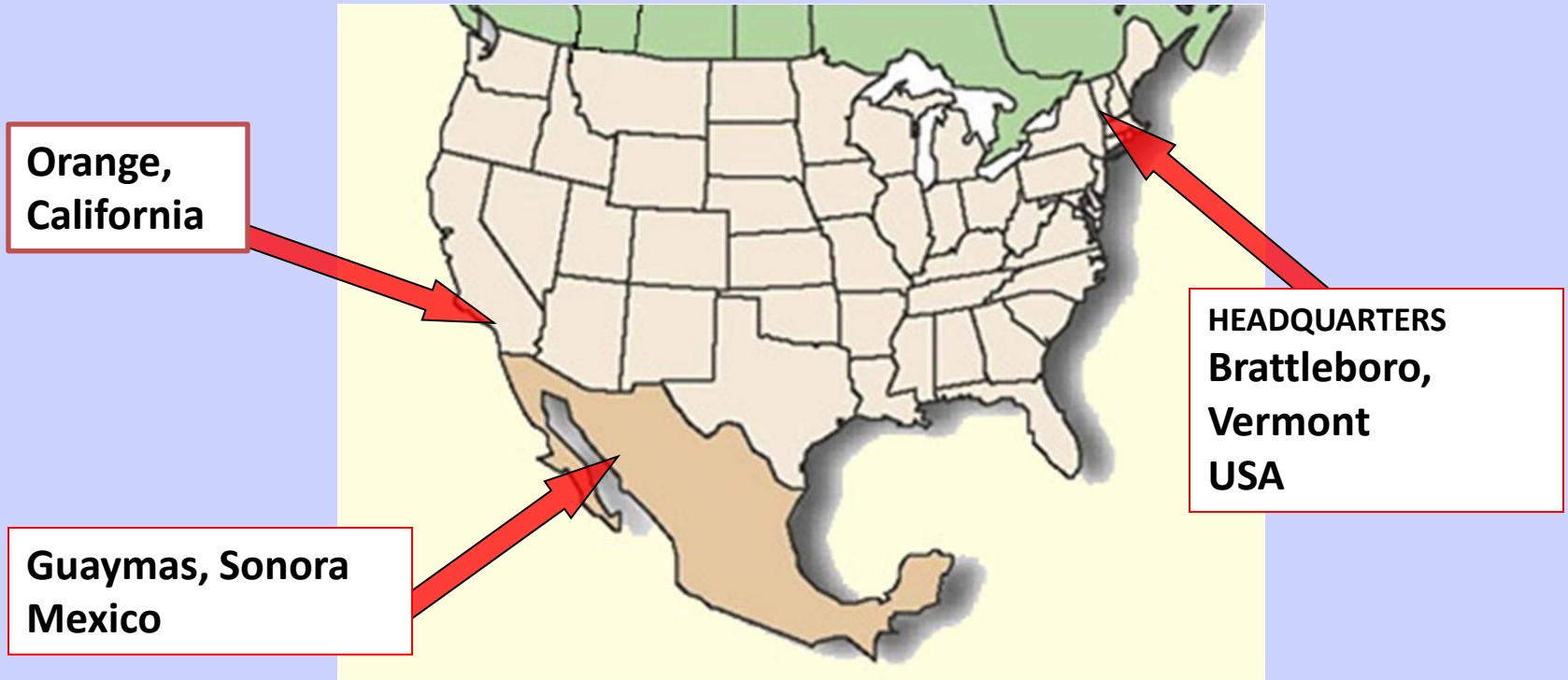
Strategic Goals/Vision

- Provide our Customers with high quality, high value products which meet their requirements and exceed their expectations.
- Continually reduce costs and improve efficiencies through Lean initiatives and other Continuous Improvement activities.
- Support our Customers with Design for Manufacture assistance, prototypes and production manufacturing.
- Keep our Vermont facility on the cutting edge of technical capabilities through continued investment in equipment and staff.
- Continue to offer the low cost advantage of our production facility in Mexico while growing and maturing capabilities at that facility.

Corporate Structure



Facilities



- 60,000 sq. ft. facility in Brattleboro, Vermont
- 41,000 sq. ft. facility in Brattleboro, Vermont
- 37,000 sq. ft. facility in Sonora, Mexico
- 1,500 sq. ft. facility in Orange, California

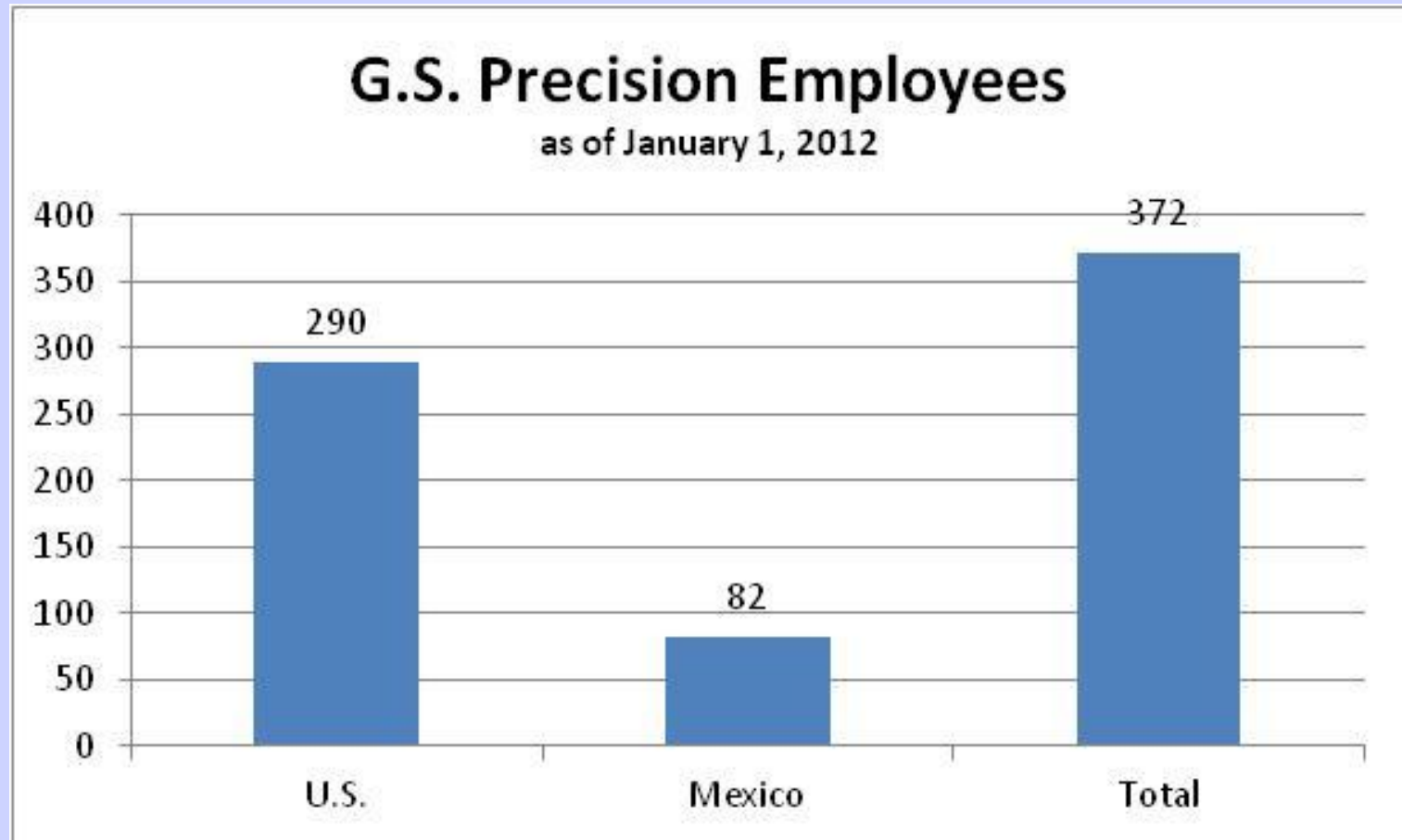
Brattleboro, Vermont, USA
101,000 sq. ft. (9,383 m²)
290 employees



Guaymas, Sonora, Mexico
37,000 sq. ft. (3,437 m²)
82 employees



Employee Distribution



Equipment

We are consistently supplementing our technical capabilities with investment in state-of-the-art precision machining equipment.



MEXICO

Our facility in Mexico provides a lower cost alternative to manufacturing in the U.S. while retaining our innovation, expertise and commitment to quality.

Mexico Facility



Mexico Facility



Mexico Facility



Mexico Facility Expansion

- Success of Mexico operation caused us to outgrow our original 17,000 sq. ft. facility which opened in 2003
- New, state-of-the-art, 37,000 sq. ft. facility opened in May of 2011
- Additional equipment and resources resulting in expanded capabilities and increased capacity
- Greater opportunity for allocation of production processes between locations to increase throughput at all facilities

Maximizing the Benefit of Multiple Facilities

- GSP's Mexico and U.S. facilities operate collaboratively to provide precision machining and assembly services to GSP's customers.
- GSP's customers benefit from a single point of access to the experience and technical capabilities of the company's Vermont operations, as well as the low cost benefit of its Mexico facility.
- Careful analysis goes into the distribution and loading of products assigned to each facility.

Industries Served

G.S. Precision proudly serves a diverse cross-section of technical and precision markets with a focus on aerospace.

Aircraft/Aerospace

Turbine Engines



Airframe Components



Defense

Missile Guidance



Flight Control



Technical/Commercial

Automotive



Medical/Surgical



Technical Capabilities

G.S. Precision combines cutting-edge technology, process innovation and manufacturing expertise to meet the technical demands of its customers.

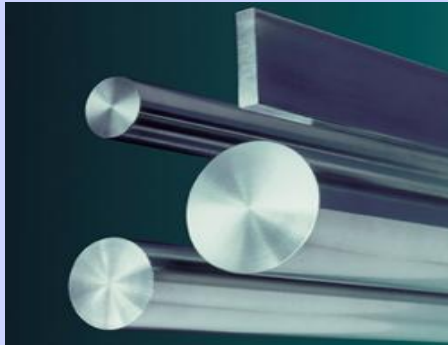
Manufacturing Engineering

We distinguish ourselves in the market by the level to which we invest in our processes to ensure success on the manufacturing floor.



Materials

We commonly work from bars or castings. Typical materials include nickel alloys, titanium, stainless steel and aluminum.



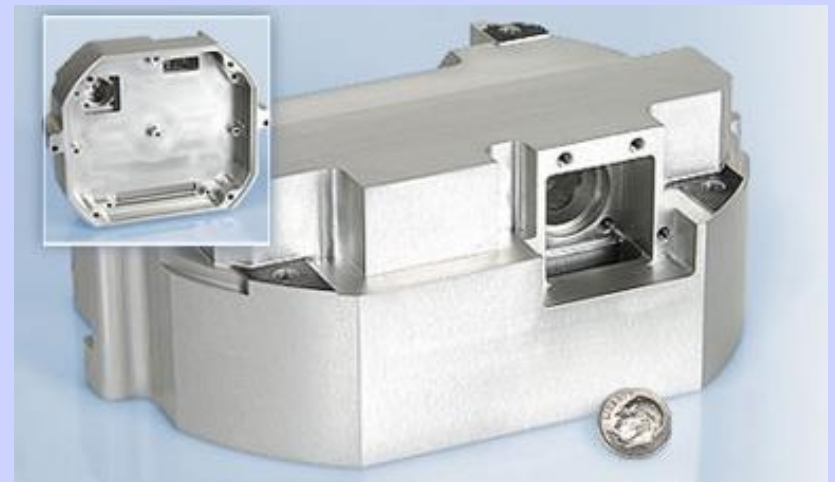
We routinely produce parts to highly accurate tolerances
Machining – 5μ (0.0002") Grinding – 2.5μ (0.0001")

From Large to Small

Sizes range from parts that you can barely see...



...to about 8" diameter or 12" cube.



Machining Capabilities

CNC Turning – live tools...



Capabilities

Multi-axis Palletized CNC Milling...



Capabilities

CNC and Conventional Swiss Screw Machines...



Capabilities

EDM (wire and sinker) and CNC Grinding...



Capabilities

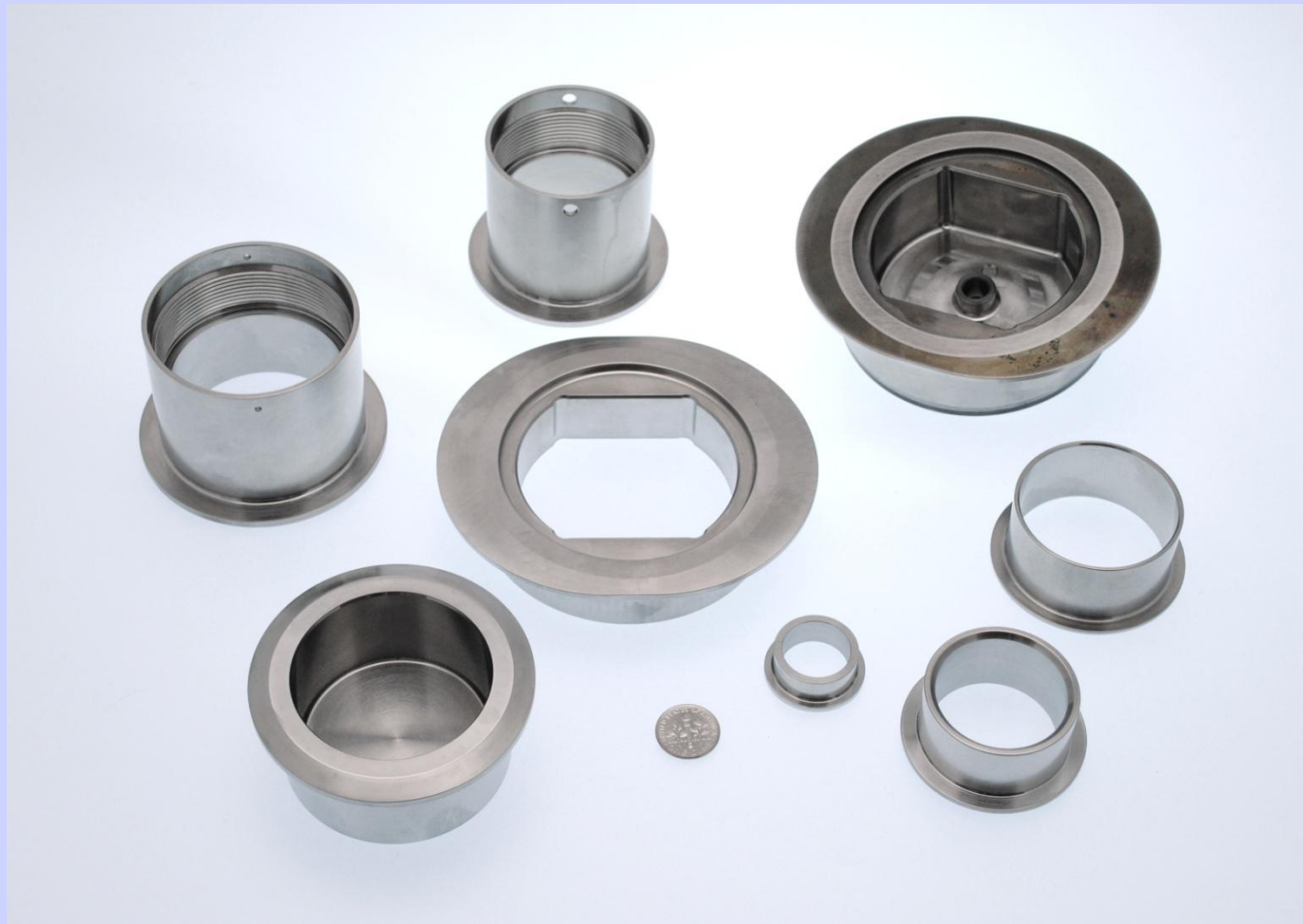
...and Assemblies.



Our Products

G.S. Precision specializes in build-to-print machining and assembly. We excel at working with challenging materials, such as exotic aerospace alloys, and routinely work to extremely tight manufacturing tolerances.

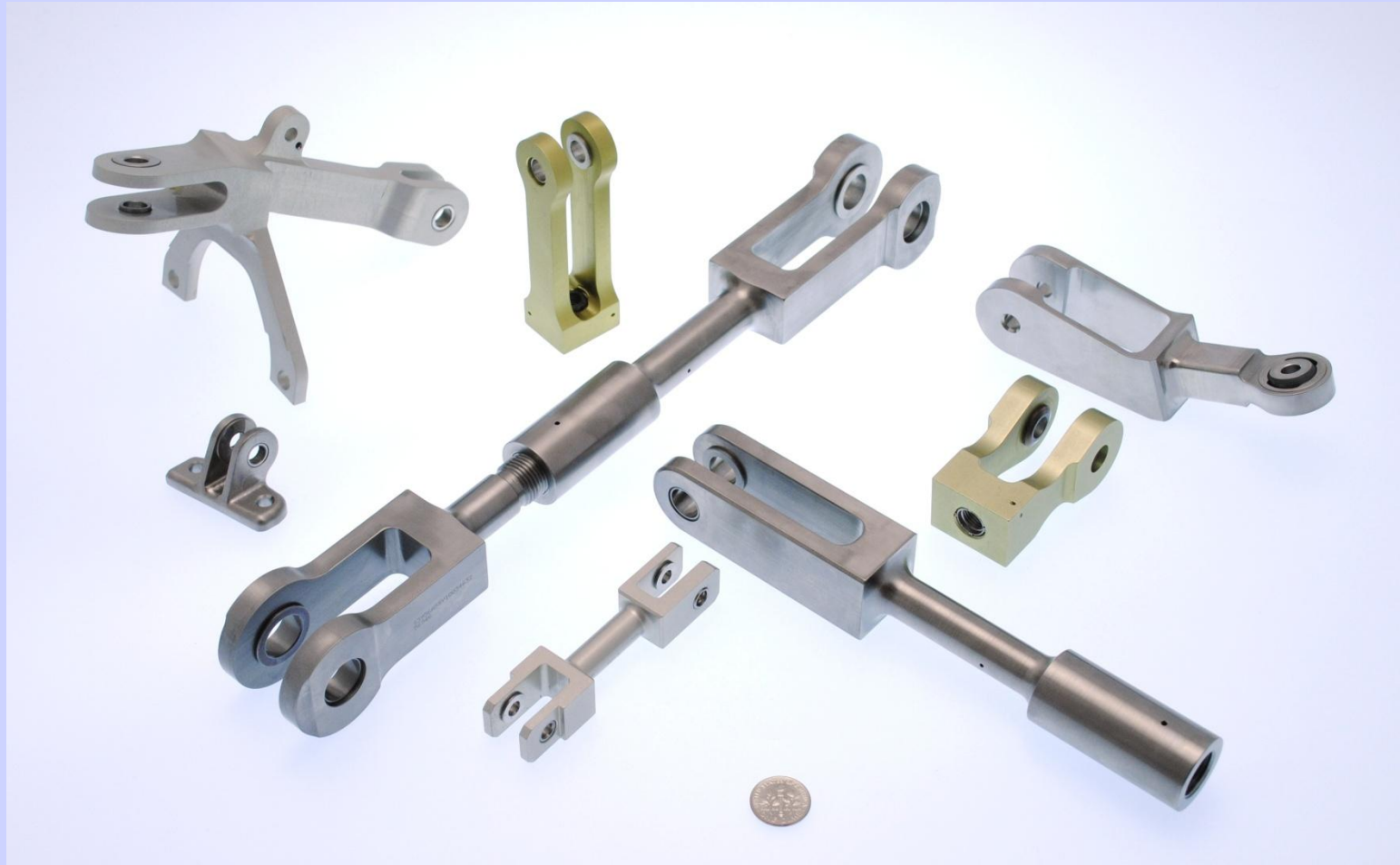
Bushings – Inconel



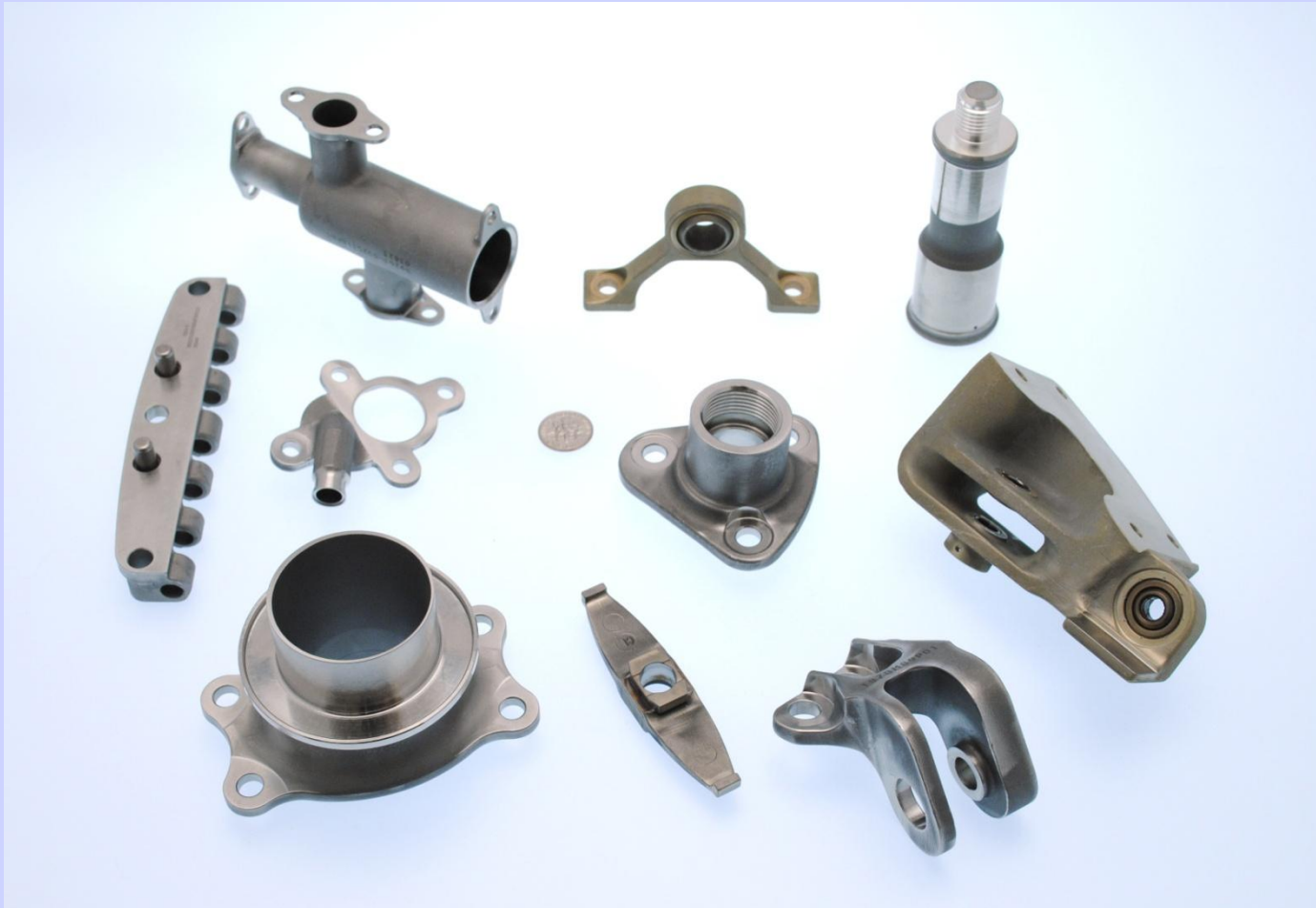
Rings



Clevis Assemblies



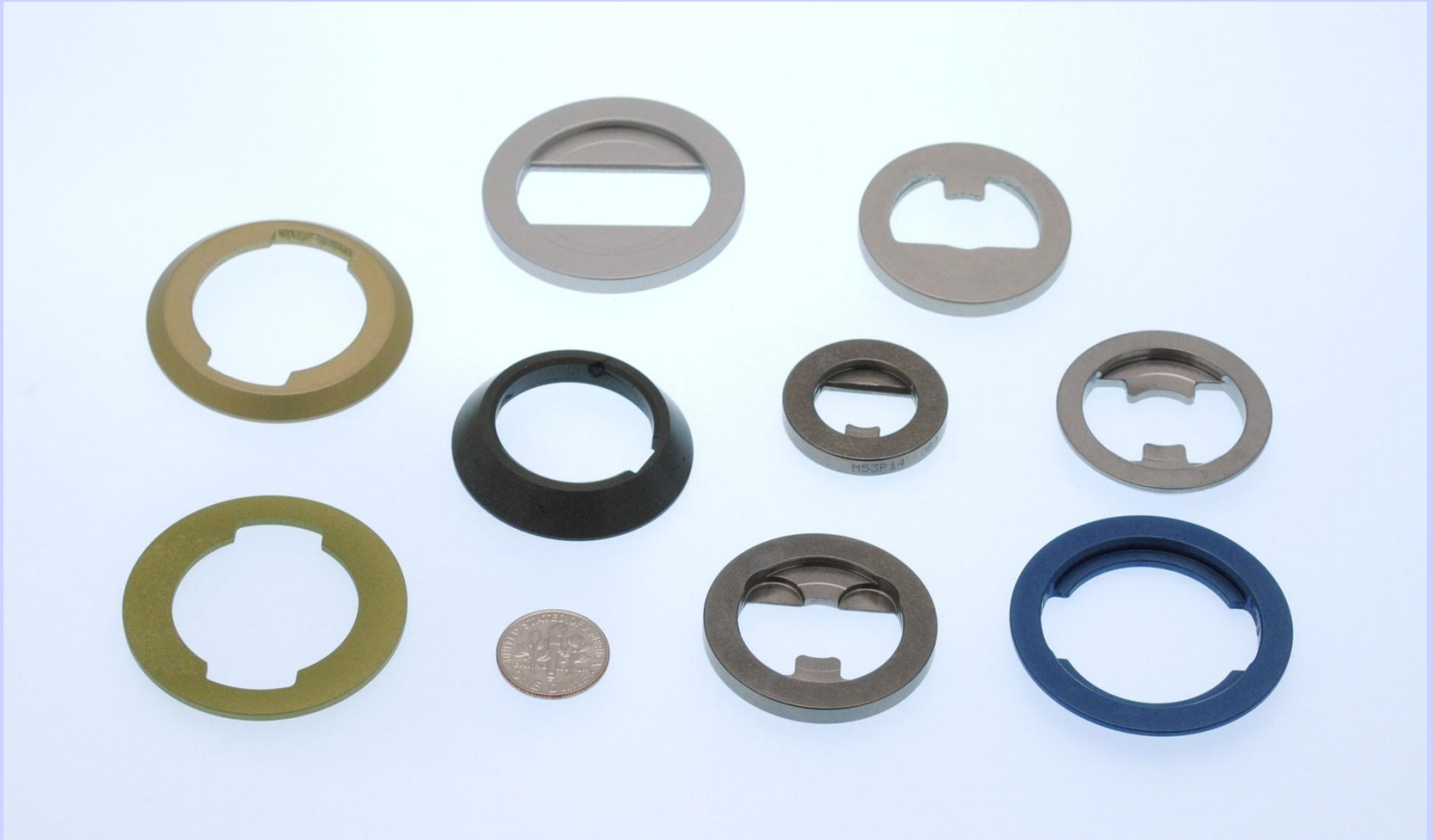
Parts Machined from Castings & Forgings



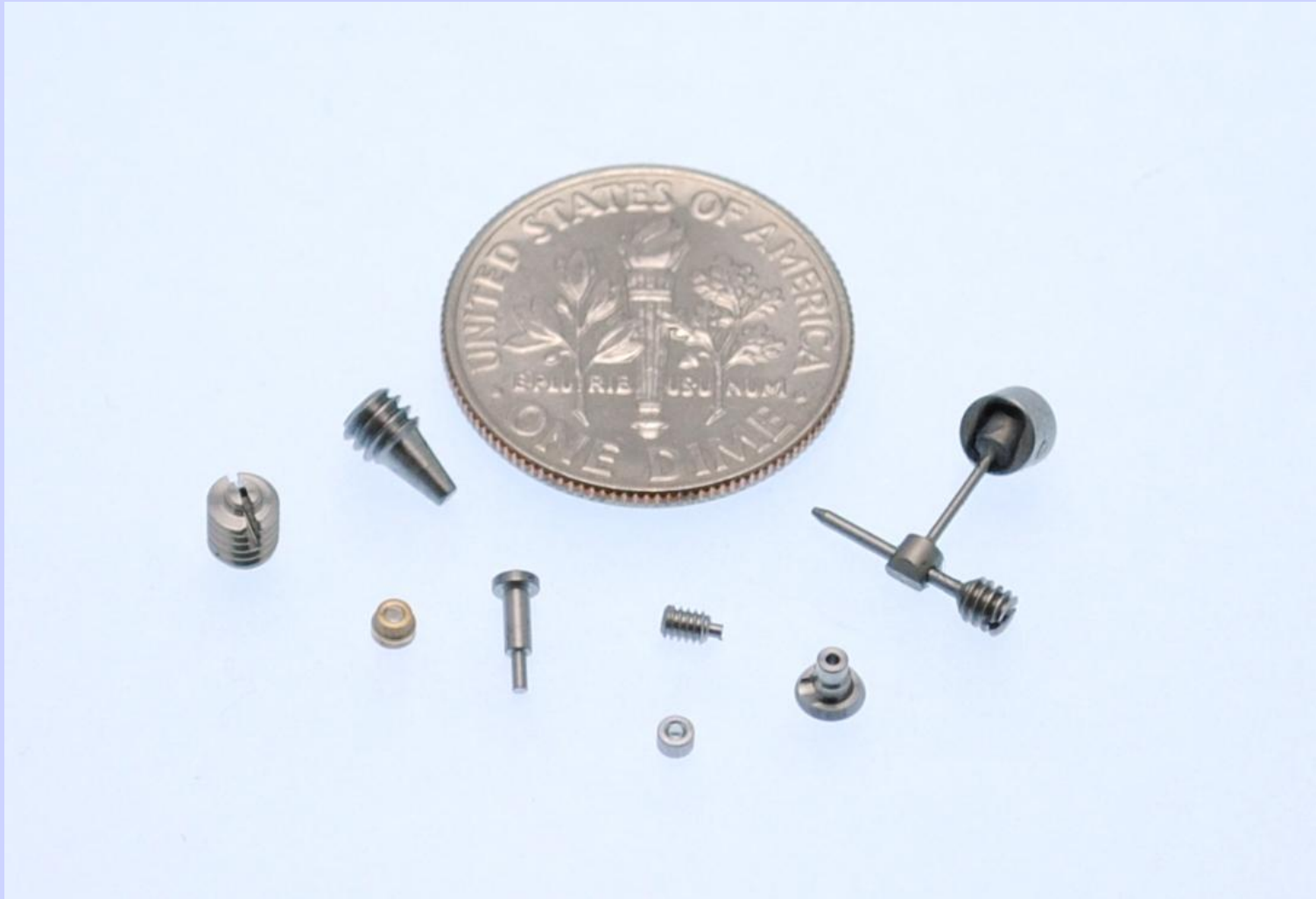
Borescope Plug Assemblies



Vane Spacers



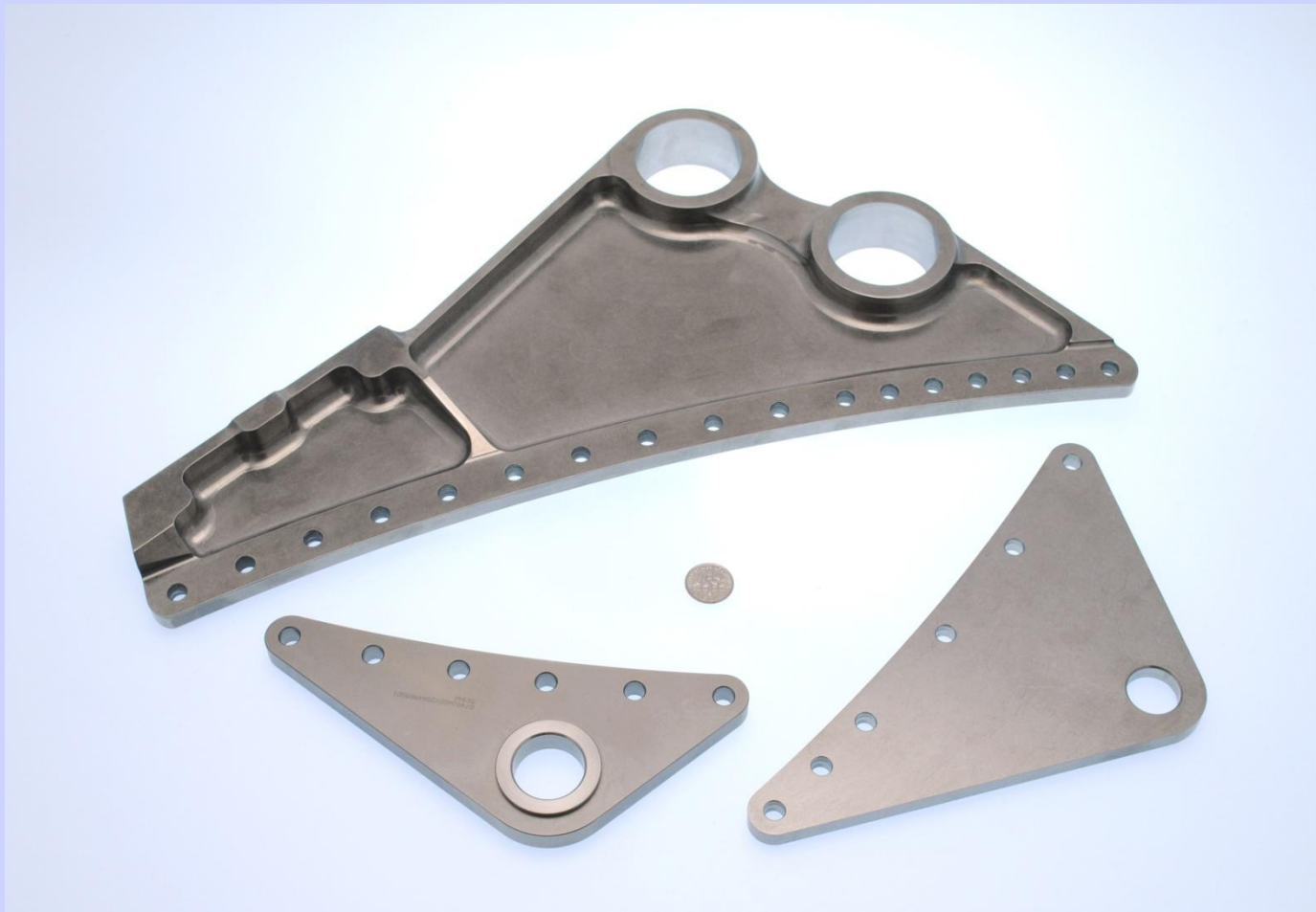
Micro-Machined Parts



Chrome Plated and Ground



Brackets



Telescope Components



Hangers



Aerospace Fittings



Housings



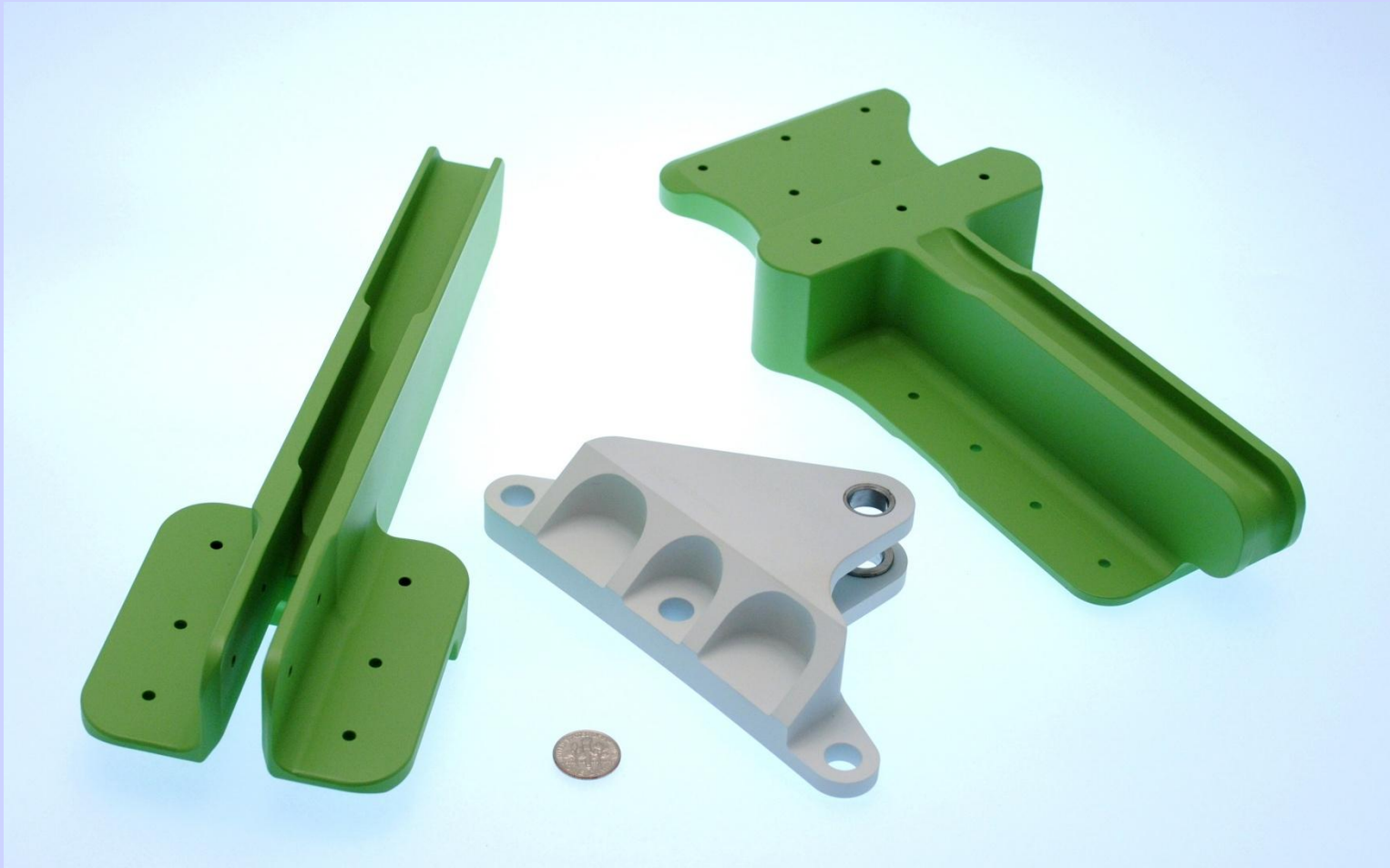
Shafts – Inconel



Segments



Airframe Components



Balance Weights



Plasma (HVOF) Coated Parts



Pins and Bushings



Operations

From personnel to software to systems and processes, at G.S. Precision we regularly invest in our people and operations with the goal of continuous improvement in our capabilities, efficiency, quality and performance.

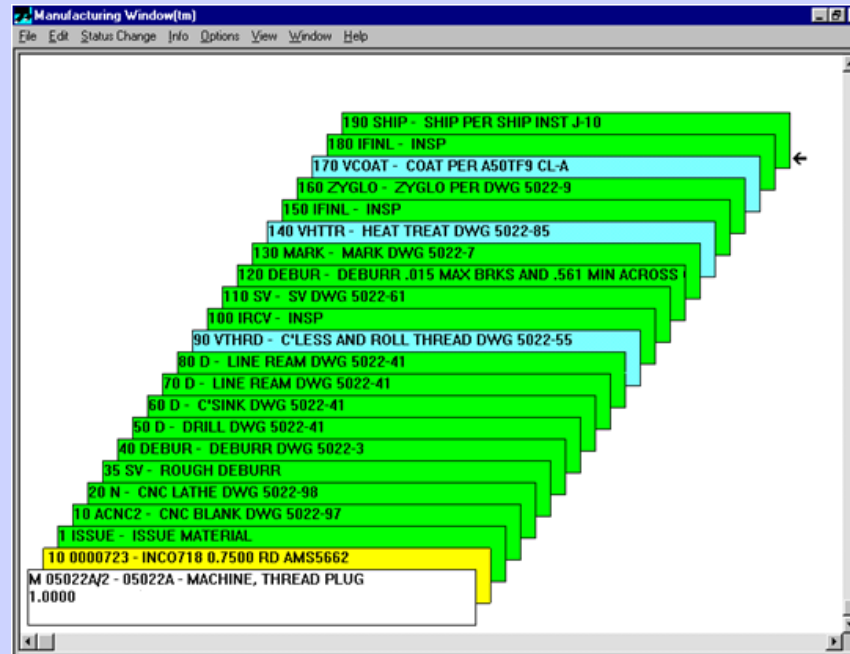
Production Planning



From initial process design to machine programming, tooling, quality planning and process improvement, key elements are documented and recorded in great detail.

Enterprise Resource Planning

We utilize Visual Enterprise™ manufacturing software as our database in support of MRP, Production Planning and Capacity Planning as well as a host of other functions.



Visual™ is a complete ERP System, supporting processes from Order Inception all the way through Accounts Receivable.

Continuous Improvement

Our culture values and rewards ideas for **Continuous Process Improvements** from all levels of the organization.



We are growth oriented, innovative in our thinking and focused on the global marketplace.

Training and Development

G.S. Precision offers its employees at all of its facilities a variety of training and development resources including:

- Hands-on training and on-the-job coaching
- Seminars and workshops
- Online training resources



Employees access individualized, online training curricula.

Lean Manufacturing Program Objectives

- Cultural Growth / Workforce Empowerment
- Executive Steering Committee Lean Project Identification and Prioritization
- Kaizen Teams and Training
- Communication & Organization
- Major 5S and Safety Initiatives
- Visual Management
- Waste Reduction (Focus of all Lean efforts)
- Set-up Reduction
- Problem Solving
- Value Stream Mapping (Production and Front End)

GSP Coatings

- GSP Coatings, a subsidiary of G.S. Precision, offers product finishing services complementary to G.S. Precision's manufacturing capabilities. This provides for consistent access to high-tech, quality coating services for G.S. Precision and its customers.
- GSP Coatings' services include:
 - Type II and Type III anodizing
 - Chem Film Type I Class 1A & 3
 - ROHS compliant Type II Class 1A & 3
- GSP Coatings is certified ISO 9001:2008, AS9100-B, and NADCAP accredited for Chemical Processing.

GSP Coatings

GSP Coatings occupies a 5800 sq. ft. facility complete with state-of-the-art equipment and cutting-edge technology.

Tank sizes and capacities accommodate parts up to 42" x 84" with a 1000 lb. maximum load.



GSP Coatings



Skilled employees perform masking and plugging operations in preparation of coating.

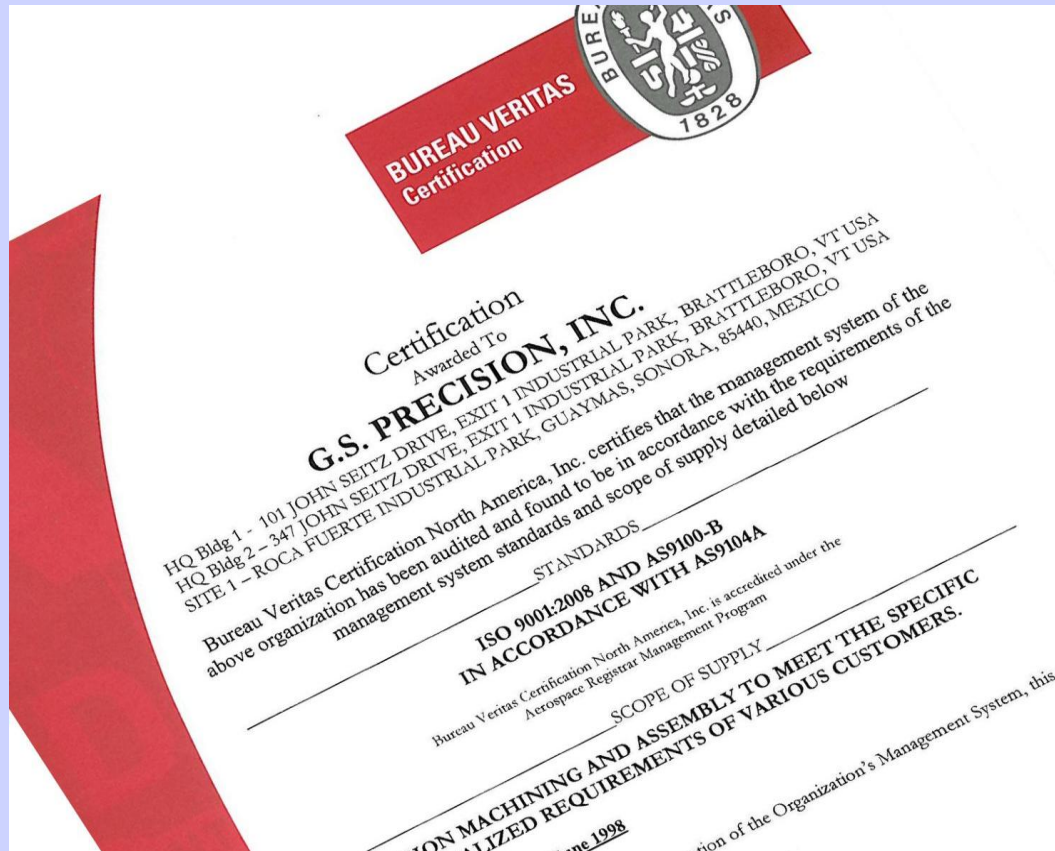
GSP Coatings employs a full quality team, staffed by QA inspectors supporting each shift, as well as a full-time lab technician and assistant.



Quality

“Our goal to be a leader in the precision machining field will be achieved by our commitment to continuously improve Quality, Efficiency, Reliability at all levels of the organization and meeting the expectations of our customers.”

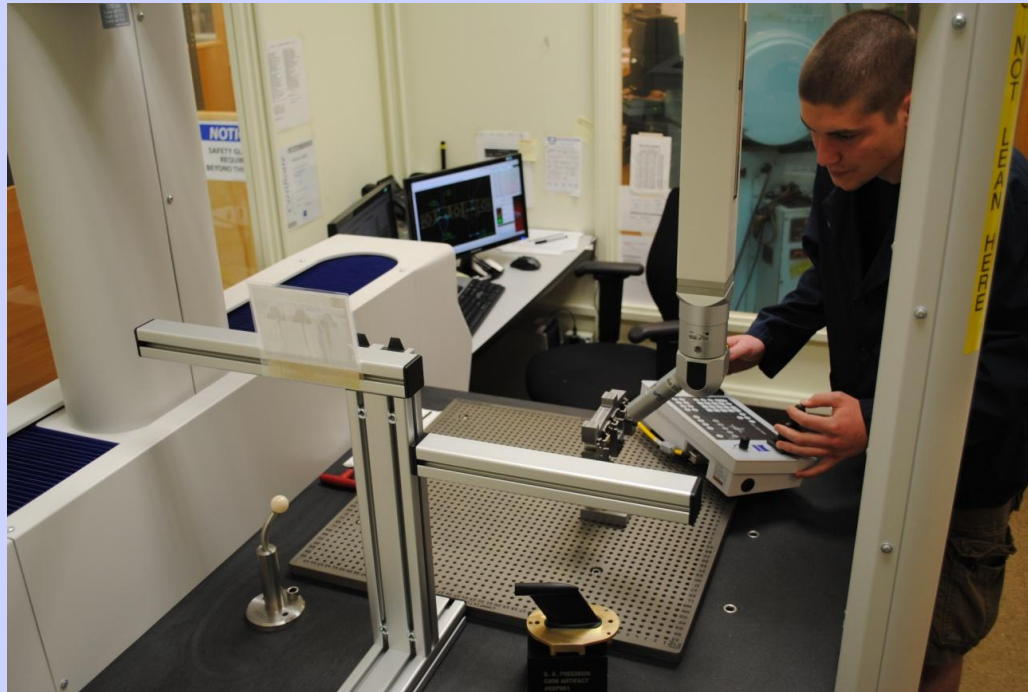
G.S. Precision is certified **ISO 9001:2008 & AS 9100-B**



We ship to direct-to-stock for many of our customers.

Inspection

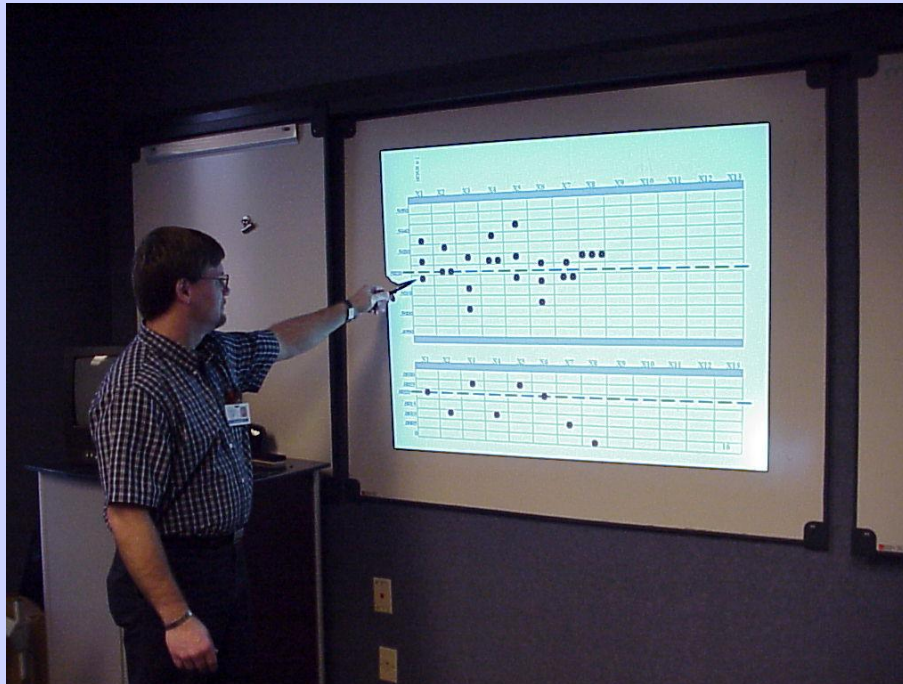
We monitor and control our manufacturing processes via statistical performance as well as product quality throughout all stages of manufacturing and prior to release to the customer.



Statistical Process Control

We conduct formal classroom training of SPC that addresses:

- Concepts and purpose
- Benefits to the operator and company
- Methods for collecting and analyzing data



The results are *outstanding quality* with minimal development time and *consistent results* on subsequent production runs.

Summary of Competitive Advantages

- Innovative precision machining and assembly techniques
- Highly skilled and experienced workforce
- State-of-the-art equipment
- Company-wide Lean Manufacturing, Continuous Improvement and cost saving initiatives
- Commitment to formal training and employee development
- Lower cost manufacturing facility in Mexico

Questions?

Please contact us to discuss your unique requirements and how we can best serve you.

(802) 257-5200

Fax: (802) 257-7937

www.gsprecision.com

sales@gsprecision.com